

 **FlexiFlow**

Revolutionizing Laboratory **Experiments**

# Redefining Next-Gen Lab Automation

FlexiFlow is a versatile Labreactor automation software, tailored to meet the demands of modern laboratory, pilot, and mini-plants. Developed with insights from leading chemical companies and following international guidelines, FlexiFlow ensures adaptability and efficiency for a wide array of applications

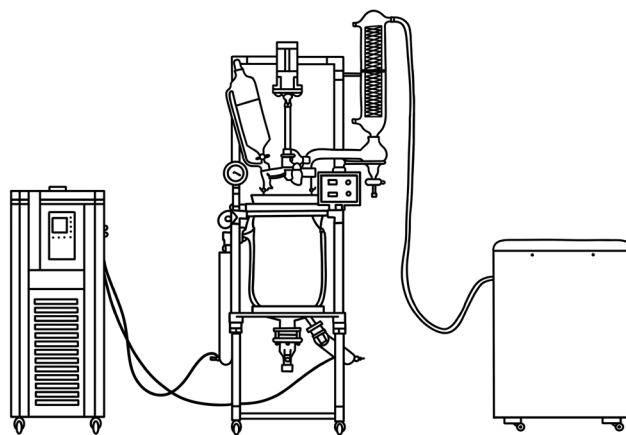
## Unique Advantages of FlexiFlow

### Flexible and Adaptive Automation

- Real-Time Adaptability
- Comprehensive Control - From data acquisition to quality assurance, automate virtually every chemical unit operation.

### Cost-Effective and Efficient Operations

- Enhanced Laboratory Utilization - Intensive use of laboratory capacity.
- Equipment Savings - Replace various individual devices, reducing setup times and costs.



### User-Friendly and Modular Design

- Easy Integration - Connect various transducers, actuators, balances, and other laboratory equipment effortlessly.
- Customizable Configuration - Modular connection techniques with freely combinable I/O's to suit unique requirements.
- Compact Solution - FlexiFlow serves as the central hub, replacing several individual devices for a streamlined experience.



#### Security and Compliance

Compliant with regulatory standards (GLP, GMP)  
Role-based access control and secure data storage



#### Quality Assurance

Optimal reproducibility and complete documentation for consistent quality



#### Dedicated Support and Training

After-Sales Support: Recognized support, a dedicated hotline with skilled professionals and comprehensive training programs

## Interactive Process Visualization

FlexiFlow's dashboard offers a real-time, dynamic representation of your processes. From trend graphs to schedulers, it's designed to give users complete control and insight. Below are the key components:

### Trend Graph

- Visualize selected parameters over time, quickly identifying patterns, trends, and potential issues.

### Data Point Cards

- Display essential data points for easy reference, customizable to focus on relevant information.

### Scheduler

- Manage automation processes by inputting specific details like Batch ID and Recipe name to initiate the automation process.

### Alarm Summary

- The dashboard provides a summary of both system and process alarms, allowing users to quickly assess and respond to any issues.

#### System Alarms

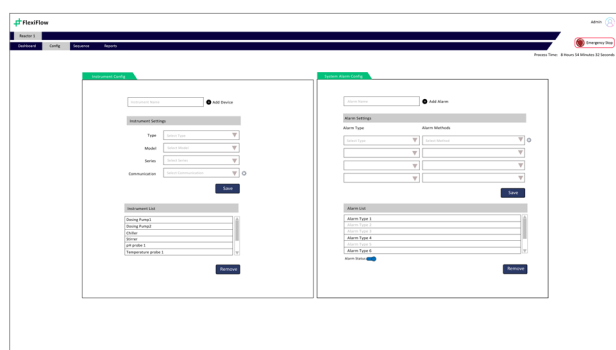
These alarms monitor the entire system's performance, alerting users to any malfunctions or deviations from specified criteria. This ensures that the hardware and software components are working seamlessly.

#### Process Alarms

Focused on the ongoing processes within the lab, these alarms notify users of any anomalies or deviations within specific experiments or reactions. This ensures that the quality and safety of the process are maintained.



## Configuration



### Instrument Configuration

- Seamless Integration - FlexiFlow supports a vast array of laboratory instruments, ensuring easy configuration and adaptability. It recognizes and communicates with devices, allowing users to modify settings and calibrations within the software.

### System Alarm Rules

- Proactive Monitoring - Set up personalized alarm thresholds for various parameters. Receive real-time alerts for any deviations, ensuring that corrective actions are taken promptly.

## Sequencing

### Recipe Management

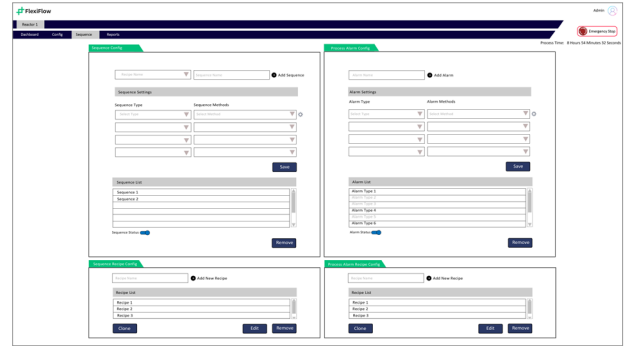
- Optimized Workflows - Create, store, and manage recipes for various processes. FlexiFlow ensures that each recipe is executed with precision, resulting in consistent and high-quality outputs.

## Sequence Editor

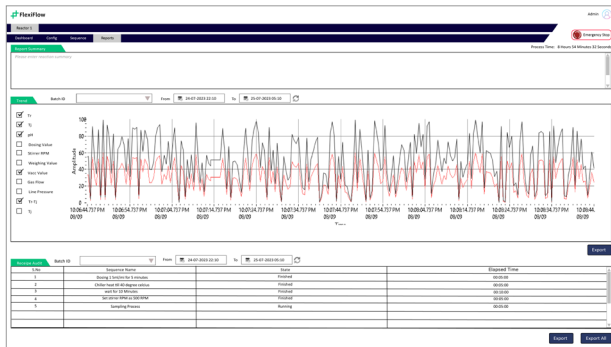
- Tailored Process Design - Craft intricate process sequences with an intuitive editor. From simple to complex workflows, the Sequence Editor offers flexibility and control.

## Process Alarms

- Safety First - Beyond system alarms, FlexiFlow monitors the ongoing processes, flagging any inconsistencies or deviations that might affect the quality or safety of the process.



## Reports



## Different Types of Charts

- Data At A Glance: Visualize your data with various chart types, catering to different analysis needs. From bar charts to trend lines, get insights into your processes with ease.

## Ejournal Summary

- Digital Documentation: Keep track of all your experiments and processes with Ejournal. It offers a comprehensive, timestamped record, ensuring traceability and accountability.

## Raw Data Export & Formats

- Accessible Data: Export raw data in universally accepted formats like PDF and Excel, ensuring easy sharing and further analysis.

## Comprehensive Reporting

- Holistic Analysis: Each report provides a detailed breakdown, from Ejournal trends to specific Batch ID trails, ensuring you have all the data points to make informed decisions.

## User Profile Management

### Admin Console

- Central Control: The Admin Console provides a holistic view of system configurations, user activities, and other essential metrics. It's a one-stop-shop for system management.

### User Addition/Deletion

- Dynamic User Management: Easily onboard new team members or revoke access when necessary. FlexiFlow ensures that only authorized personnel can access and modify crucial data.

### User Audit Logs

- Traceable Actions: Every user action is logged with a timestamp. This ensures accountability, transparency, and aids in troubleshooting or audit requirements.

The image shows a screenshot of the FlexiFlow Admin Console. It features a top navigation bar with 'Admin Console' and 'Reports' tabs. Below, there is a table for user management. The table has columns for 'User ID', 'User Name', 'User Email', 'User Role', 'User Status', and 'User Date'. The interface is clean and modern, with a dark blue header and light gray panels.

User ID	User Name	User Email	User Role	User Status	User Date
1	John Doe	john.doe@flexiflow.com	Admin	Active	2023-08-01 10:00:00
2	Jane Smith	jane.smith@flexiflow.com	User	Active	2023-08-01 10:00:00
3	Mike Johnson	mike.johnson@flexiflow.com	User	Inactive	2023-08-01 10:00:00
4	Sarah Lee	sarah.lee@flexiflow.com	User	Active	2023-08-01 10:00:00

## Technical Specifications

- Operating Systems Supported - Windows
- Minimum Hardware Requirements:  
CPU - 2 GHz or higher  
RAM - 8 GB  
Hard Disk - 10 GB available space
- Licensing Options - **Single-user, Multi-user**

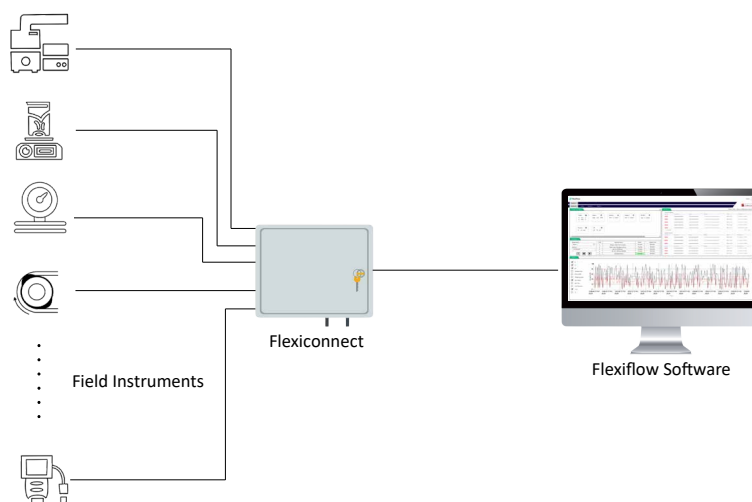


Fig: Instrument Connection Topology Drawing

## Features Comparison

Aspect	Manual	FlexiFlow	Traditional Automation
Real-Time Monitoring	×	Comprehensive	Basic
User Profile	×	Multi-User	Mutli-User
Integration	×	Extensive	Limited
Recipe Management	×	With Scheduler	Basic
Data Visualization	×	Trend & Cards	Limited
Alarms	×	System & Process	Basic
Customizability	×	High	Limited
Compliance	×	✓	✓
Support	×	Comprehensive	Limited
Cost Effectiveness	Low	High	Moderate

**ProComm Dynamics**  
Experience Truly Automated

www.procommdynamics.com  
info@procommdynamics.com  
+91 63793 00266

