

Experience Truly Automated

FlexiFlow is a versatile Labreactor automation software, tailored to meet the demands of modern laboratory, pilot, and mini-plants. Developed with insights from leading chemical companies and following international guidelines, FlexiFlow ensures adaptability and efficiency for a wide array of applications

Unique Advantages of FlexiFlow

- Real-Time Adaptability
- Comprehensive Control - From data acquisition to quality assurance, automate virtually every chemical unit operation.
- Enhanced Laboratory Utilization - Intensive use of laboratory capacity.
- Equipment Savings - Replace various individual devices, reducing setup times and costs.
- Easy Integration - Connect various transducers, actuators, balances, and other laboratory equipment effortlessly.
- Customizable Configuration - Modular connection techniques with freely combinable I/O's to suit unique requirements.
- Compact Solution - FlexiFlow serves as the central hub, replacing several individual devices for a streamlined experience.



Customizable Instrument Control

Control a variety of instruments within the lab reactor, such as stirrers, pumps, valves, and sensors, and customize the parameters for each instrument.

Data Logging and Analysis

View graphs, charts, and other visualizations to provide deeper insights in the experiments

Experiment Sequencing & Scheduling

Sequence & Scheduling multiple experiments, each with their own set of instrument parameters based on the user-defined schedule

Alerts and Notifications

Sends alerts and notifications to stay informed about experimental conditions and failures via email notifications

Recipe Management

Recipe management feature, allowing users to store and retrieve experiment recipes, and automatically adjust parameters based on the selected recipe

Customizable Report Templates

Customizable report templates for professional and clear presentation of experimental findings

Complete Control of your Experiments With ease

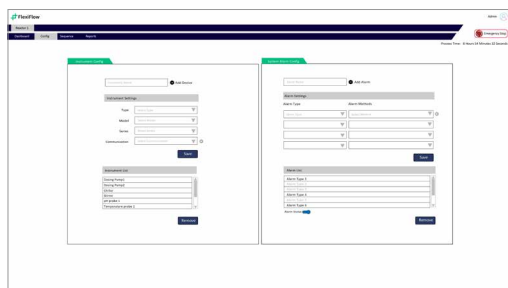
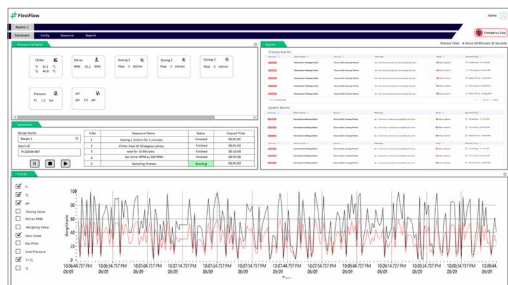
Our FlexiFlow Software streamlines the experimental process. It also enables precise and consistent control over experimental parameters for optimized results and greater efficiency in the laboratory

Reporting & Data Analytics

Our lab reactor automation software includes advanced reporting and data analytics features, providing real-time data visualization and trend analysis to optimize processes and improve productivity.

The user-friendly interface allows for the customization of reports, Ejournal and data interpretation, enabling efficient decision-making.

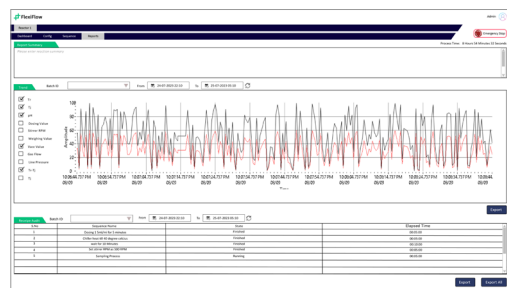
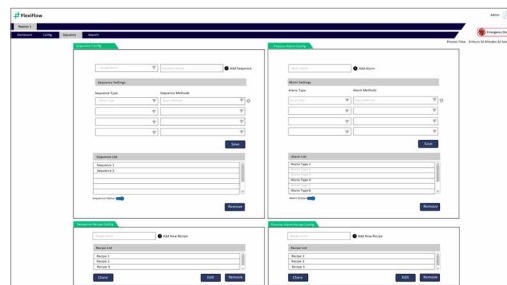
Our software's key USPs include increased accuracy, higher productivity, and significant cost savings



Experiment Sequencing & Scheduling

Experiment Sequencing & Scheduling feature is the process of designing, executing, and analyzing experiments. Our software allows for easy customization of experiment sequences to fit the unique needs, improving accuracy and consistency.

With user-friendly controls, experiment sequencing becomes effortless, saving valuable time and resources. Our software empowers scientists and researchers to achieve their goals with ease and precision.



Experience truly automated lab reactor control and take your processes to the next level with our software
Contact us to learn more about how we can help your lab reactor needs

